

Chulmleigh Risk Profile 2018/19



Overview



This plan presents the risks in your area and the actions that Devon & Somerset Fire & Rescue Service (DSFRS) will take to make the community safer. Our actions are a mix of activities based on prevention, protection and emergency response, all undertaken by the people that are best suited for each activity.

Chulmleigh is steeped in History dating back to 815AD. It has been identified as an area of rural tranquillity as well as an area of great landscape value. The Fire Station and personnel are a prominent part of the community actively taking part in a range of community activities, most noticeably the annual Chulmleigh Fair and weeklong celebration's. Recently the station has prepared and hosted a community event to raise awareness of the villages defibrillator and in conjunction with SWAST have trained as many people within the community as possible to operate it. Chulmleigh Fire Station is located on New Street in Chulmleigh, and covers the town of Chulmleigh and surrounding rural hamlets. It covers an area of

approximately 188.42 square kilometres and a population of 5,778 people.

Chulmleigh personnel train each Monday night. The station attends a number of RTC's on the A377 as well as incidents that relate to its rural location, such as Thatch Fires, Barn Fires etc. Chulmleigh has a large number of Historic properties built traditionally of materials such as cob and are of architectural importance, personnel at the station ensure that advice is available to any member of the community that has concerns about fire safety.

The Watch Manager has overall responsibility for the station. The fire station houses one firefighting appliance. Chulmleigh Fire Station is an on call station (retained duty system) with 1 Watch Manager, 2 Crew Managers and 9 Firefighters. This totals 12 personnel. Preventing fires and deaths and injuries in fires are conducted by the Community Safety Advocates that augments the work that is done by the station.

The station area is home to a range of risks, including 21 hotels and 31 factories and warehouses. Outside of the town, the station ground also covers an extensive area of rural risks.

The risks mentioned above will, in association with the station performance, be the focus for the stated actions within the plan.

Below are the Officers in charge of this station.



Watch Manager Clarke
- On call



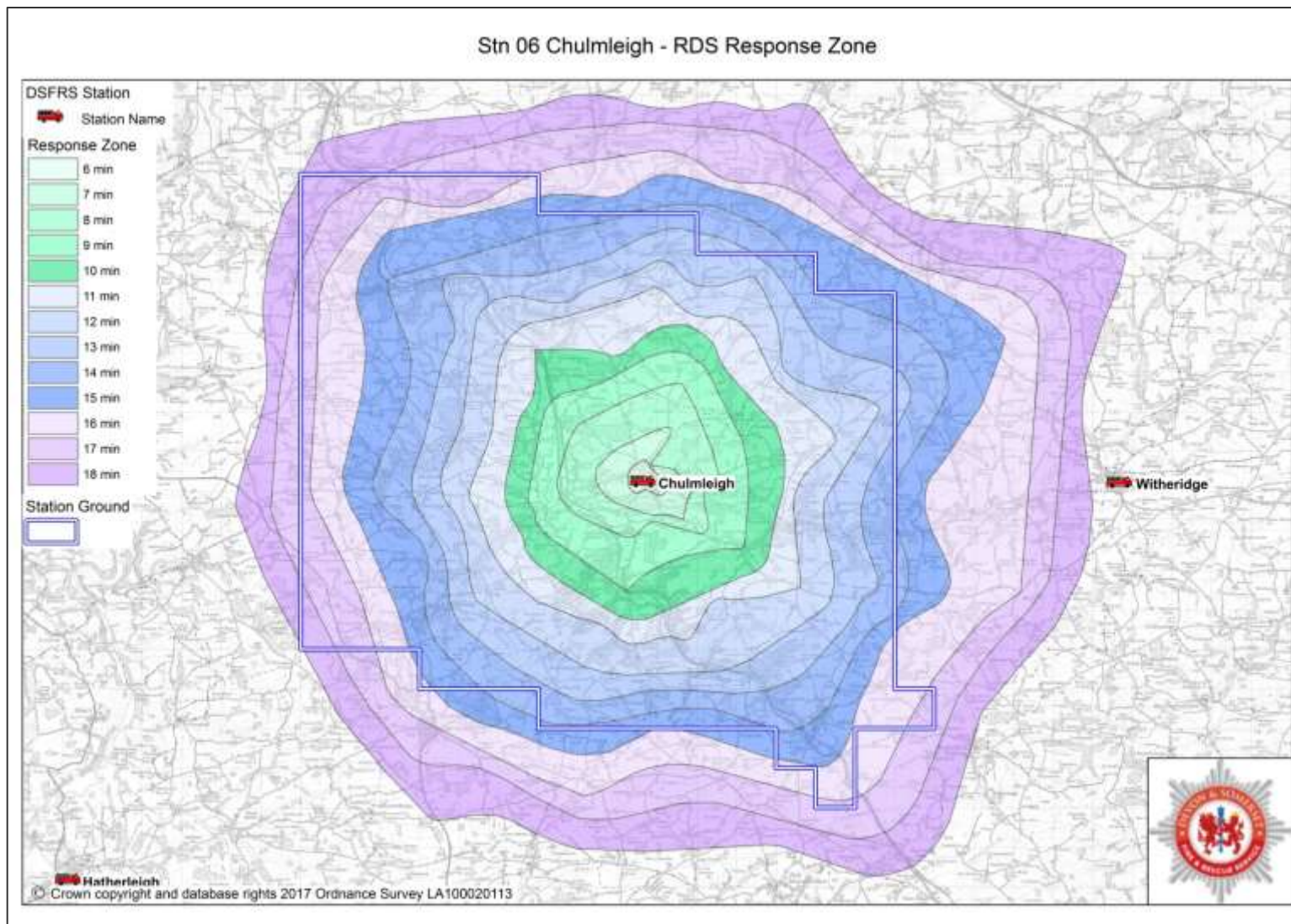
Local Risk Manager
Colin Mills

To discuss the content of this plan with a member of the fire service, please use the contact details below:

Name: Local Risk Manager Colin Mills
Tel: 01237 423859
Email: cmills@dsfire.gov.uk

For more information please visit
www.dsfire.gov.uk/yoursafety

Our Response



The map opposite shows an estimate of how long the fire engine will take to reach residents in Chulmleigh from the time they make the call. It will naturally take us longer to get places further away from the station.

Residents of Chulmleigh should take the following precautions to help keep them safe from fire:

- Fit a working smoke alarm
- Take care when cooking and never leave cooking food unattended
- Plan and practise your escape route
- Make a bedtime check
- Don't overload your electrics
- Put cigarettes right out
- Use candles carefully
- Have your chimney swept regularly

Prevention and Protection

We maintain a very simple philosophy that prevention is better than cure and we recognise that risk reduction begins with safe behaviours at home, at work, or on the road, and this leads to a safer society for all. We have developed a community safety strategy to focus our work and set our levels of resourcing where we have most risk. Using our knowledge, along with that of local organisations and partners we will target those people and properties that are more likely to be affected by fire and other emergencies, according to our risk analysis and risk profiling. The risks identified at Chulmleigh station have been identified below, our prevention and protection work will be prioritised accordingly.

Dwelling Fires	Business Safety	Road Safety	Community Resilience	Water Safety	Youth Development & Community Cohesion	Health & Wellbeing	Heritage
							

Risk Key

				
VERY HIGH	HIGH	MEDIUM	LOW	VERY LOW

Our Incidents

The activity information for this local community area is shown in the tables below.

Incidents attended (within station area)

Station - 06 Chulmleigh	2012/13	2013/14	2014/15	2015/16	2016/17	Five Year Average
All Fires	27	22	21	12	4	17
Fires where people live (primary)	3	3	4	0	0	2
Fires where people work and visit (primary)	8	2	5	7	3	5
Fires - outdoor and refuse fires (secondary)	0	2	2	1	1	1
Chimney Fires	16	15	10	4	0	9
All False Alarms	5	10	11	13	7	9
False Alarms - Automatic Fire Alarms	3	9	5	9	6	6
False Alarms - Good Intent	2	1	5	4	1	3
False Alarms - Malicious attended	0	0	1	0	0	0
All Special Service Calls	25	21	16	20	68	30
Co-Responding	9	4	3	6	54	15
Road Traffic Collisions	7	5	7	10	5	7
Flooding & Water Rescues	6	1	0	0	0	1
Other Special Service calls	3	11	6	4	9	7
All Incidents	57	53	48	45	79	56
All Incidents minus False alarms	52	43	37	32	72	47
All Incidents minus False alarms and Co-Res.	43	39	34	26	18	32

Station Availability

In the 12 months from April 2016 to March 2017 the station was able to crew the following appliances

	Hours Unavailable	% Hours Availability
Fire Engine 1 Retained	512.5	94.1%

Station Response Activity:

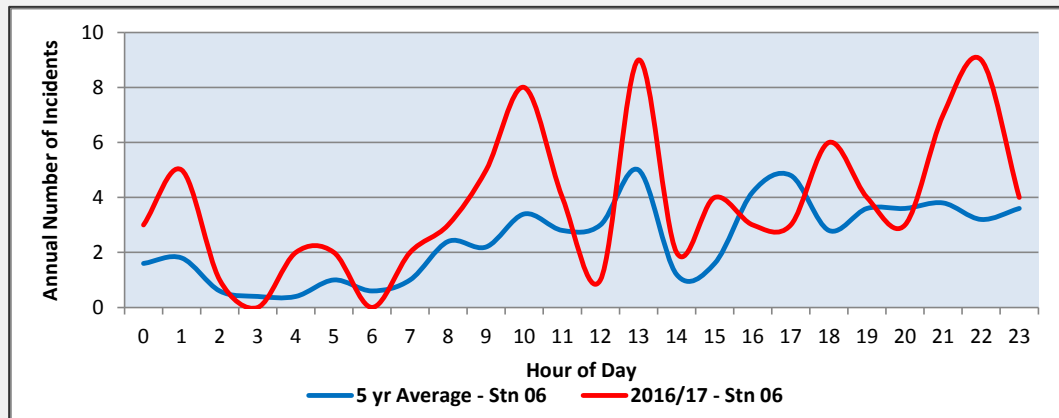
The table below shows the number of times the local fire station was called out (which may or may not have resulted in attending an incident). It also shows the number percentage of calls on and off the station ground.

Station - 06 Chulmleigh	2012/13	2013/14	2014/15	2015/16	2016/17	5 year average
Total Turnouts	58	79	74	64	61	67
Turnouts to incidents on Station Ground	40	56	45	44	27	42
% of Turnouts to Incidents on Station Ground	69.0%	70.9%	60.8%	68.8%	44.3%	63.1%
% of Turnouts to incidents not on Station Ground	31.0%	29.1%	39.2%	31.3%	55.7%	36.9%

Station Demand 2012/13 - 2016/17*

The graphs below demonstrate the peak demand on the station in terms of time of the day and month of the year. (*Incidents in station area, not including false alarms or co-responding)

Hour of the day



Month of the year

